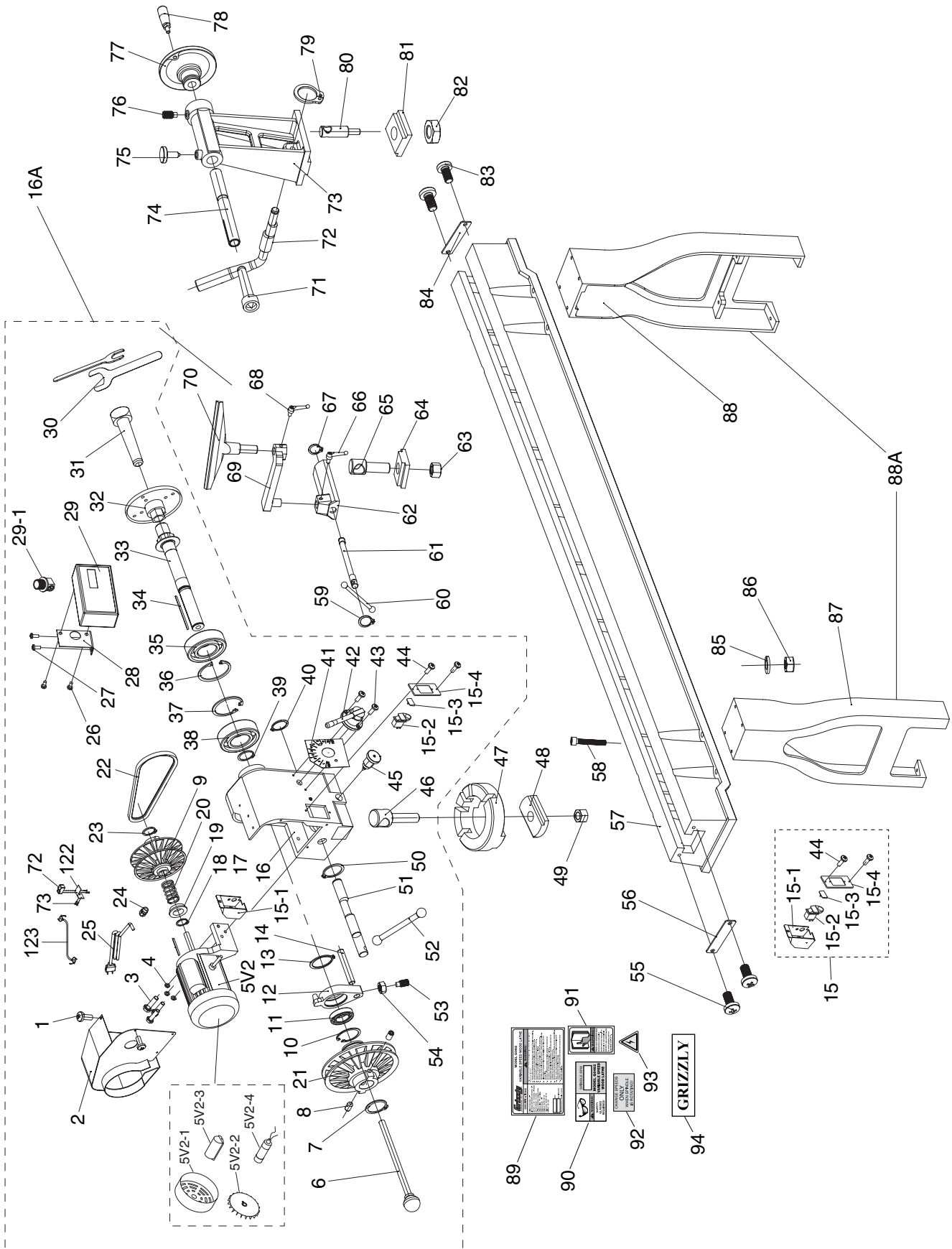


# Parts Breakdown



# Parts List

REF	PART #	DESCRIPTION
1	PS05M	PHLP HD SCR M5-.8 x 8
2	P0462002	MOTOR COVER
3	PB26M	HEX BOLT M8-1.25 X 30
4	PLW04M	LOCK WASHER 8MM
5V2	P0462005V2	MOTOR 2HP 110V V2.01.09
5V2-1	P0462005V2-1	FAN COVER V2.01.09
5V2-2	P0462005V2-2	FAN V2.01.09
5V2-3	P0462005V2-3	CAPACITOR COVER V2.01.09
5V2-4	P0462005V2-4	S CAPACITOR 100M 250V V2.01.09
6	P0584022	PUSH-OUT ROD
7	PR12M	EXT RETAINING RING 35MM
8	P0584026	HOLO KNURL SET SCR M6 X 10
9	P0462009	MOTOR PULLEY SET (L&R)
10	PR38M	INT RETAINING RING 62MM
11	P0462011	BALL BEARING 6007ZZ
12	P0584009	SHIFTING LEVER BRACKET
13	PR12M	EXT RETAINING RING 35MM
14	P0462014	RACK
15	P0462015	COMPLETE SWITCH ASSY
15-1	P0584070	SWITCH BOX
15-2	PSW06	PADDLE SWITCH W/KEY
15-3	PSW09-1	REPLACEMENT SWITCH KEY
15-4	P0584072	SWITCH BOX PLATE
16	P0462016	HEADSTOCK
16A	P0462016A	COMPLETE HEADSTOCK ASSY
17	PK93M	KEY 4 X 4 X 80
18	PR06M	EXT RETAINING RING 16MM
19	P0584020	SLEEVE
20	P0584019	COMPRESSION SPRING
21	P0462021	SPINDLE PULLEY SET, L&R
22	PVM24	V-BELT M-24 3L240
23	PR06M	EXT RETAINING RING 16MM
24	P0462024	PLASTIC JAW NUT M20X1.5
25	P0462025	POWER WIRE
26	PS68M	PHLP HD SCR M6-1 X 10
27	PS68M	PHLP HD SCR M6-1 X 10
28	P0462028	BASE
29	P0462029	DIGITAL READOUT
30	P0584084	FLAT WRENCH 32MM
31	P0584003	SPUR CENTER MT#2
32	P0462032	FACEPLATE 6" x 1"-8
33	P0462033	SPINDLE 1" x 8
34	PK93M	KEY 4 X 4 X 80
35	P6205	BEARING 6205
36	PR26M	INT RETAINING RING 52MM
37	PR26M	INT RETAINING RING 52MM
38	P6205	BEARING 6205
39	PR11M	EXT RETAINING RING 25MM
40	PR58M	EXT RETAINING RING 24MM
41	P0462041	SPEED CHANGE LABEL
42	P0584048	GEAR ASSEMBLY
43	PS08M	PHLP HD SCR M5-.8 X 12
44	PS02M	PHLP HD SCR M4-.7 X 12
45	P0584045	SWIVEL PIN ASSEMBLY
46	P0462046	SPECIAL SCREW

REF	PART #	DESCRIPTION
47	P0584037	TURNING BASE
48	P0584043	BED CLAMP-A
49	PN29M	HEX NUT M18-2.5
50	PR58M	EXT RETAINING RING 24MM
51	P0462051	LEVER
52	P0462052	HANDLE
53	PSS21M	SET SCREW M8-1.25 X 25
54	PN03M	HEX NUT M8-1.25
55	PS08M	PHLP HD SCR M5-.8 X 12
56	P0584039	BAFFLE
57	P0584038	BED
58	PSB12M	CAP SCREW M8-1.25 X 40
59	PR08M	EXT RETAINING RING 19MM
60	P0462060	HANDLE
61	P0584055	ECCENTRIC ROD
62	P0584056	TOOL REST BODY
63	PN29M	HEX NUT M18-2.5
64	P0462064	CLAMP
65	P0462065	BOLT-A
66	P0584057	HANDLE ASSY M10-1.5 X 15
67	PR08M	EXT RETAINING RING 19MM
68	P0584057	HANDLE ASSY M10-1.5 X 15
69	P0584058	EXTENSION TOOL REST
70	P0584060	TOOL REST
71	P0584061	TAILSTOCK LIVE CENTER MT#2
72	P0462072	SHAFT
73	P0462073	TAILSTOCK
74	P0462074	TAIL SPINDLE
75	P0462075	TAILSTOCK SCREW
76	P0462076	CONE SET SCREW
77	P0462077	HANDWHEEL
78	P0462078	HANDLE
79	PR01M	EXT RETAINING RING 10MM
80	P0462080	SPECIAL BOLT M10-1.5
81	P0462081	CLAMP
82	PN02M	HEX NUT M10-1.5
83	PS08M	PHLP HD SCR M5-.8 X 12
84	P0462084	PLATE
85	PLW04M	LOCK WASHER 8MM
86	P0462086	STAND LEG (LEFT/RIGHT)
86	PN03M	HEX NUT M8-1.25
87	P0584074	STAND LEG (LEFT)
88	P0584078	STAND LEG (RIGHT)
88A	P0462088A	COMPLETE LEG ASSY (BOX 2)
89	P0462089	G0462 MACHINE ID LABEL
90	P0462090	RPM DISPLAY/GLASSES LABEL
91	PLABEL-12A	READ MANUAL LABEL
92	P0584050	SPEED INSTRUCTION LABEL
93	PLABEL-14	ELECTRICITY WARNING LABEL
94	P0584079	GRIZZLY LOGO LABEL
95	P0462095	TACH SENSOR
96	PS13M	PHLP HD SCR M3-.5 X 20
97	P0462097	TACH SENSOR BRACKET
98	P0462098	TACH SENSOR CORD

